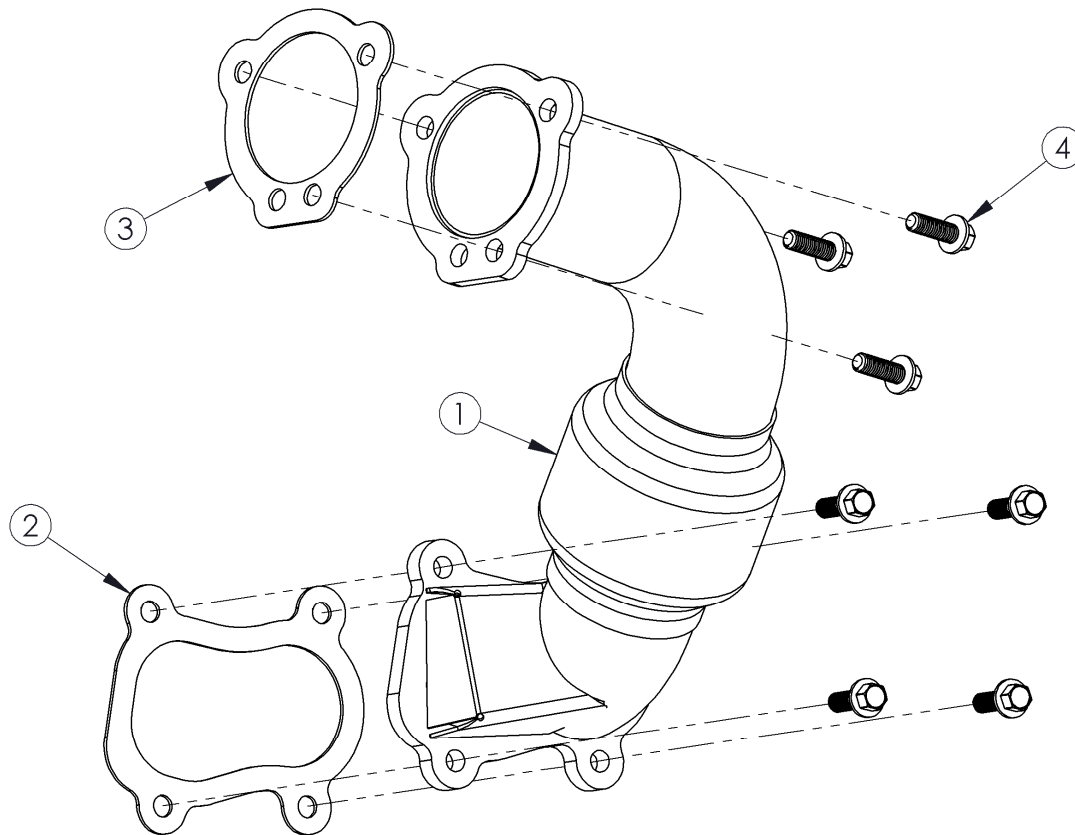


229TP

TURBO PIPE

2012-2013 ARCTIC CAT 1100 PRO CROSS
/ PRO CLIMB



1. TURBO PIPE
2. GASKET
3. TURBO GASKET
4. HEX BOLT (7 PCS.)

PLEASE READ BEFORE STARTING INSTALLATION

While MBRP Inc. has made every effort to ensure that all components of this product are of superior quality and properly packaged it is the installer's responsibility to ensure the following before removal of the factory components:

- that ALL components shown above are present.
- that ALL mating components fit together.
- that there are no damaged components.
- that the product you have purchased is appropriate for your vehicle year, model and configuration.
- that the product will not interfere with any modifications previously installed or planned.
- that you have read and understand these instructions.

If you have any questions or are uncertain about any aspect of the installation of this product to your vehicle please contact your dealer before commencing installation.



Removal of Stock Turbo Pipe:

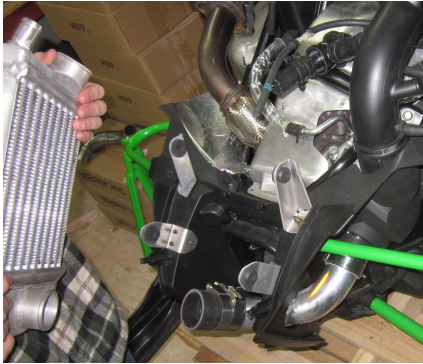


Figure 1



Figure 2

1. Remove the engine cover.
2. Loosen band clamps and remove the hoses from the intercooler.
3. Remove the intercooler. **Refer to Figure 1**
4. Remove the screws securing the turbocharger heat shield, and then remove the heat shield. **Refer to Figure 2**
5. Remove the four hex nuts attaching the turbo pipe flange to the turbo outlet. Also remove the threaded studs from the turbo outlet. **Refer to Figure 3**
6. Remove the hex bolts attaching the turbo pipe outlet flange to the muffler inlet flange (retain fasteners), and then remove the turbo pipe and gaskets.

Installation of MBRP Inc. Turbo Pipe:

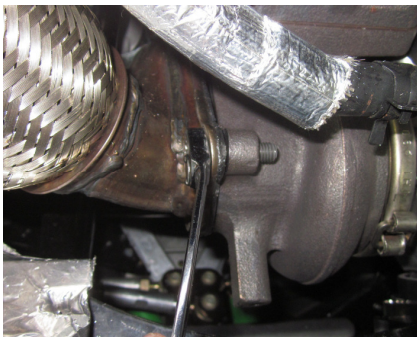


Figure 3

1. Place the **Turbo Gasket** over the turbo outlet flange and install the **Turbo Pipe** onto the turbo outlet using the supplied M8 **Hex Bolts**. Do not fully tighten the fasteners yet. **Refer to Figure 4**
2. Place the **Gasket** between the **Turbo Pipe** flange and the muffler inlet flange and attach the flanges using the hardware previously removed from the stock connection.
*If installing to an MBRP muffler or straight pipe use the extra M8 **Hex Bolts** provided.



Figure 4

3. Torque the M8 **Hex Bolts** to 225in-lbs.
4. Replace the turbocharger heat shield.
5. Reinstall the intercooler, and reconnect all hoses and band clamps.
6. Replace the engine cover.

Congratulations! You are ready to begin experiencing the improved performance and driving excitement of your MBRP Inc. turbo pipe upgrade. We know you will enjoy your purchase.